

## A Home that Hears

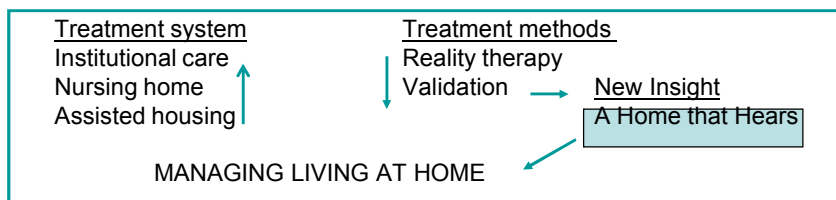
Giving support and safety to people who have trouble with memory  
- project in the region of Häme

Social Development Co LTD



## People with Dementia

- The greying Finland
  - The amount of over 65 years old people is growing 11 % to the year 2030
- Population get older – dementia symptoms increase
  - In the year 2010 there will be 130 000 people with dementia
  - The increasing amount of memory disease: 12 000 new case/year
- Complicated equation: Increasing amount of service needed, Institutional care is under measured, about 15 – 20 % of nursing staff will retire in ten years, labour shortage is already true...
- Development of method of treatment enabling living longer at home



## A Home that Hears

[www.sosiaalikehitys.com](http://www.sosiaalikehitys.com)

- The project seeks to find ways to support people with dementia to manage at home longer
- The target of the project is to find new, working solutions to develop a supportive living environment at home.
- The focus is on themes: safety, perceiving, illumination, colors, the elements of decoration, aid tools, welfare technology, surveillance and social interaction.

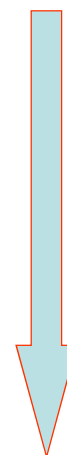


Sosiaalikehitys Oy

## Significant modifications from the needs of the client

[www.sosiaalikehitys.com](http://www.sosiaalikehitys.com)

- The questions of safety technology: the safety devices (a stove which cuts electricity automatically, a carpet which reports fallings and a reminder of dose of medicine) and safety phone
- Perceiving: the lucidness of the home, how to conceive the room understanding where is the doors or light switch, how colors act in this context, the meaning of accessibility, the glare from windows, how to place mirrors (to avoid illusion that someone is inside the apartment)
- Illumination: The need to increase light in the sphere of activities, to lead with light to walk for example from bedroom to toilet at nights
- Other: the safety of bathroom (safety rails, slipping), cupboard and door locking, surveillance (outdoor lock and outgoing control)



Sosiaalikehitys Oy

## What's going on?

www.sosiaalikehitys.com

### Based on our research and knowledge of our regional expert team:

- *A Guide Book*: how to create an environment that supports the quality of life and enhances safety making possibly living at home longer (funded mainly by the Ministry of Environment, [www.ymparisto.fi/julkaisut](http://www.ymparisto.fi/julkaisut))
- *A Pilot Model Home* in Ilveskoti, Hämeenlinna – open for visitors for viewing
- *Several "Hearing Homes"* - customized for elderly people who suffer from dementia in Häme region
- *A Private Assisted Housing Unit* conforming to the principles of a hearing home in Renko.
- *A Working Concept*: how a municipality can easily organize customer and requirement oriented action process to the modifications of homes to support home living



Sosiaalikehitys Oy

### *A Private Assisted Housing Unit* conforming to the principles of a hearing home

www.sosiaalikehitys.com

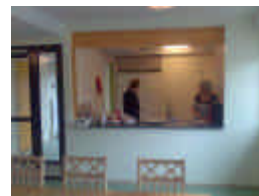
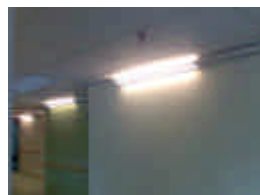
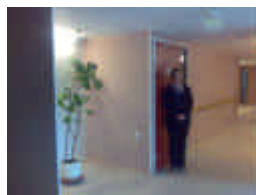
#### *Rosamaria*

1. *Founded June 2009*

2. The main focus:

- Perceiving: the lucidness of the home (colors)
- Illumination: The need to increase light in the sphere of activities (lights)
- *Innovative solutions*: A Dining room as a Market place: closeness, togetherness, and stimulating environment

3. *Contact Information: Kaarina Koskiniemi, Kuntoutus- ja dementiakoti Rosamaria*  
[kaarina.koskiniemi@rosamaria.fi](mailto:kaarina.koskiniemi@rosamaria.fi)



Sosiaalikehitys Oy

## A Home that Hears

[www.sosiaalikehitys.com](http://www.sosiaalikehitys.com)

A regional opportunity to develop a home living concept to support people with dementia to prolong the moment when institutional care is current

Thank you!



Sosiaalikehitys Oy